

RXTX board size: 3.25 in. x 2.5 in.

PA/Filter module outline
(plugs on top of RXTX board)

I/Q input
from line-out

+12V PWR

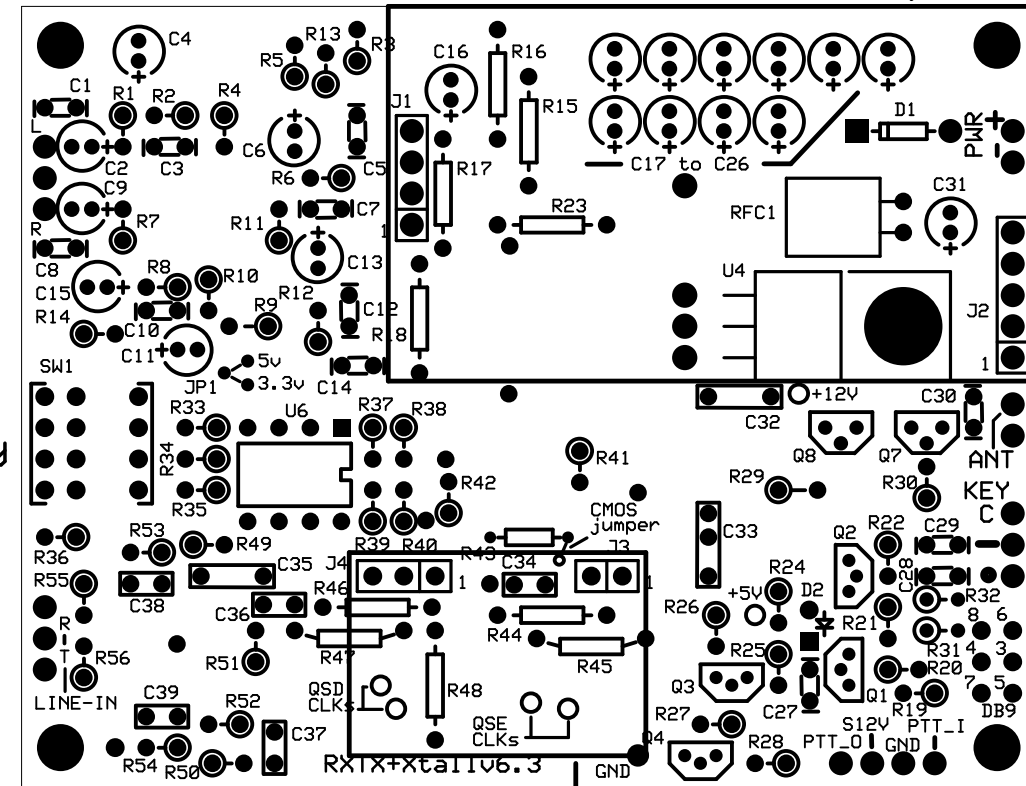
DIP switch for
center frequency
selection

ANT input

I/Q output
to line-in

Paddles input

Rocky 3.x serial interface



RX BPF module outline
(plugs on top of RXTX board)

PTT input