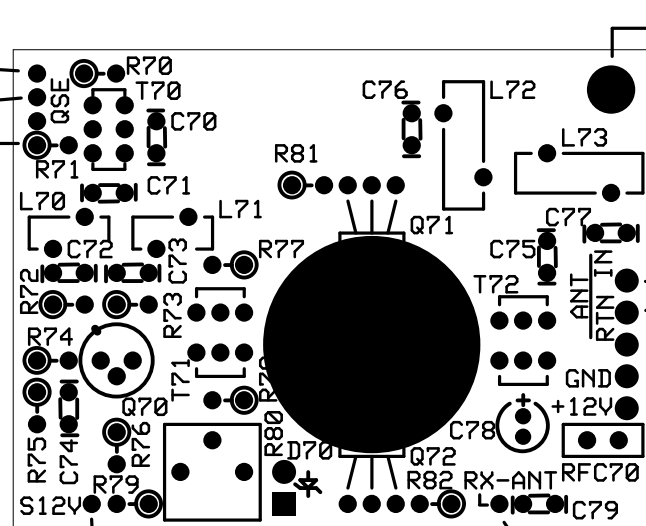


# Connections between daughter board and RXTX board

Three connections at T1

- To U3 pin 7
- To junction R15 and R16
- To U3 pin 9



mount board with 3/8 inch threaded standoff, 4-40 x 1/4 inch screw, two nylon washers to upper right corner of RXTX board

ANT / ANT return

12v DC PWR and GND  
12v connect at junction of RFC2 with 12 v bus

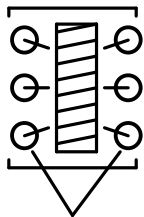
To junction of C25 and Q6 drain

To junction of R17 and R22

## Notes:

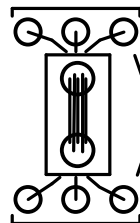
- 1) Q71 and Q72 mounted with flat face upward from circuit board
- 2) Heat sink stack: 1/4-20 x 1/2 inch (or x3/4 inch) bolt (through from bottom of board), Q71-Q72, SIL-PAD, brass washer, hex nut
- 3) Trim SIP-PAD "washer" to OD of brass washer

T70 detail



Each winding connects to pair of holes

T71/T72 detail



Each winding connects to pair of holes