

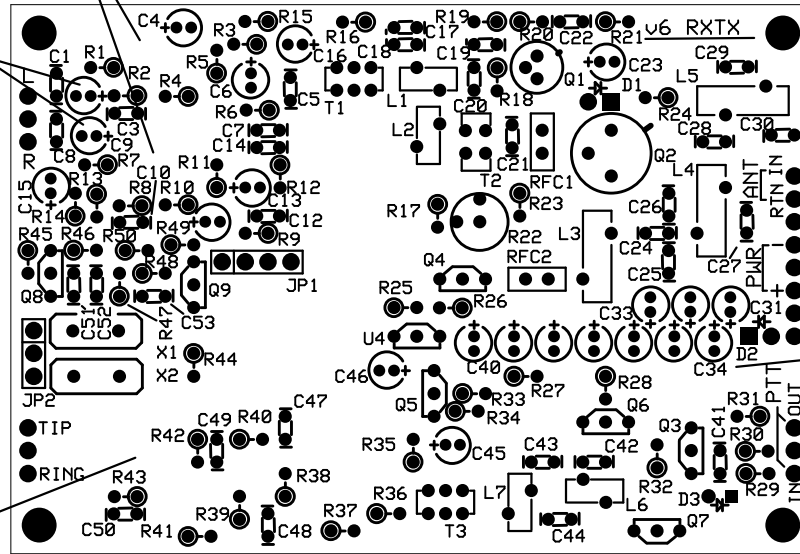
TLC2262 (U1 and U2)
(on bottom side of board)

C2 and C9 replaced with ceramic caps
Input from line-out

Jumper plug selection
at JP2 of two crystals
jumper pins 1 and 2 for X1
jumper pins 2 and 3 for X2

Output to line-in

OPA2228UA (U8)
(on bottom side of board)



Antenna / return connections

power ground pins
switched 12v output

12v DC power in pins

C31 through C40

PTT in and out

C54 through C74 0.1uF are 1206 SMT caps on bottom of board
Except for U1, U2 and U8, other SOIC devices to locations with the right pin count