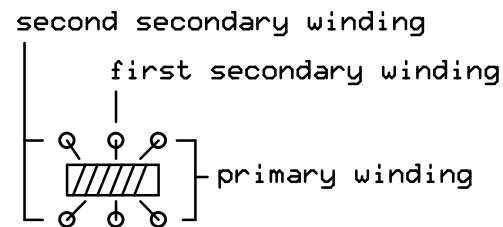
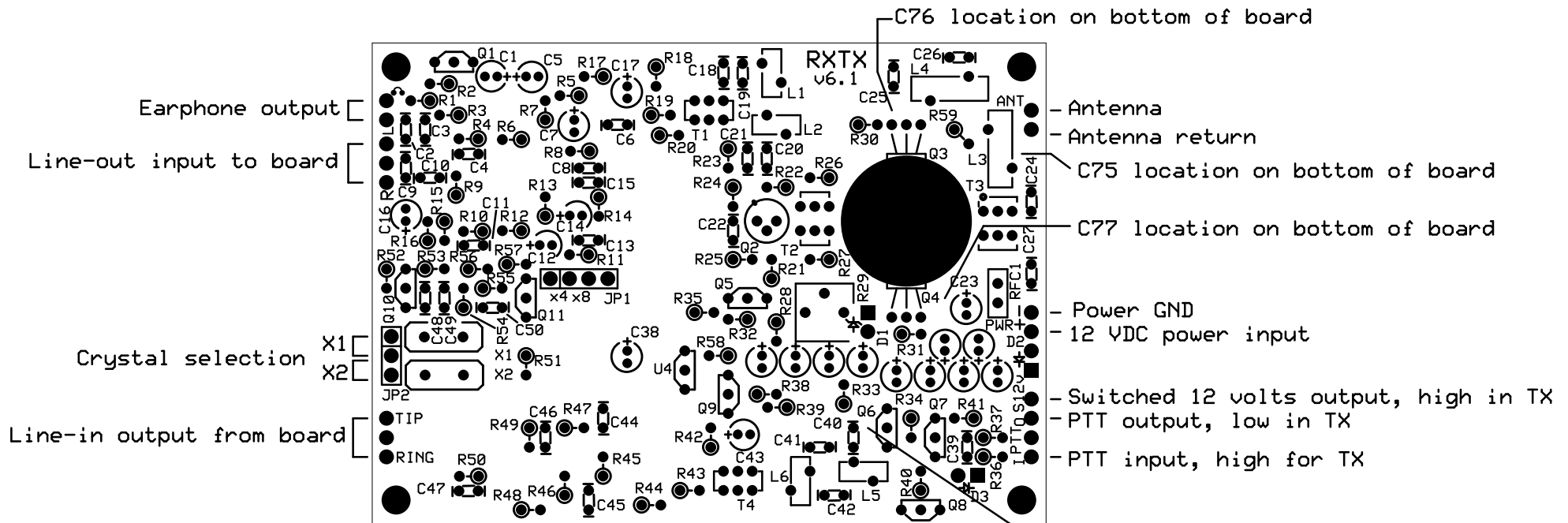


T1 wiring, top view



T4 wiring, top view

**Notes:**

- 1) All SMT capacitors are size 1206 and are on the bottom of the board
- 2) SOIC-8 positions on the bottom of the board are filled with TLV2462 dual opamps
- 3) SOIC-14 positions on the bottom of the board are filled with 74HC74 devices
- 4) SOIC-16 positions on the bottom of the board are filled with FST3253 devices